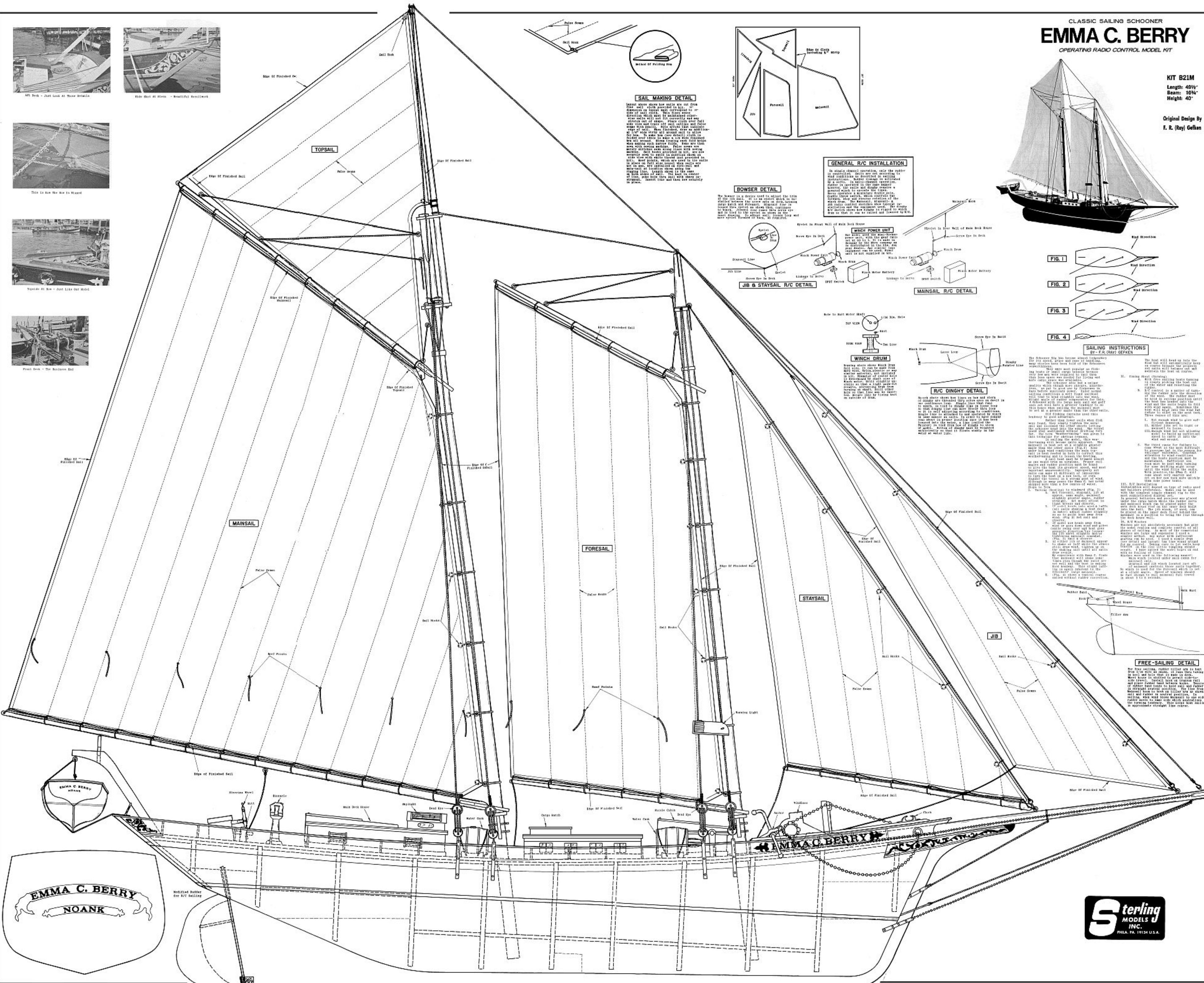


# SAILING INSTRUCTIONS

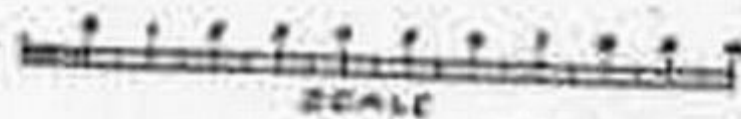
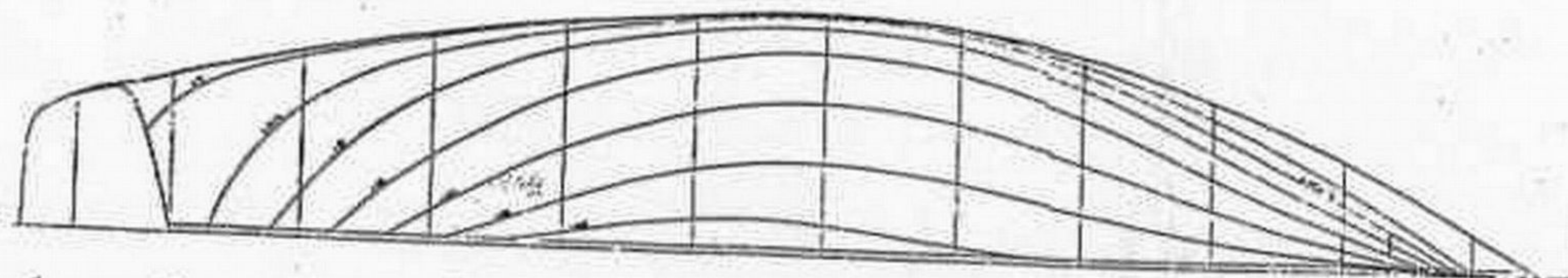
[illegible]

FREE-SAILING DETAIL

For free sailing, rudder tiller arm is bent from 1/8" wire as shown. It runs thru line in keel and hole that is made in deck. Mast house is shifted to permit side-by-side travel. Rudder and boom are raised and plane rudder head between blocks. Tension of rubber band tends to hold sail and rudder in straight neutral position. The line from Mastrol boom to hook on tiller arm is shown. Rudder and rudder head are raised, free sailing, when wind blows Mastrol to one side, rudder moves to same side which neutralizes the turning tendency. This keeps boat sailing in approximate straight line course.







**"EMMA C BERRY"**

Built 1888 at New York

40' x 38' x 14' 6" x 10'

Long Ton 100 1/2 Net Ton 100 1/2 F. S. 100 1/2

Displacement 22,400 lbs

